

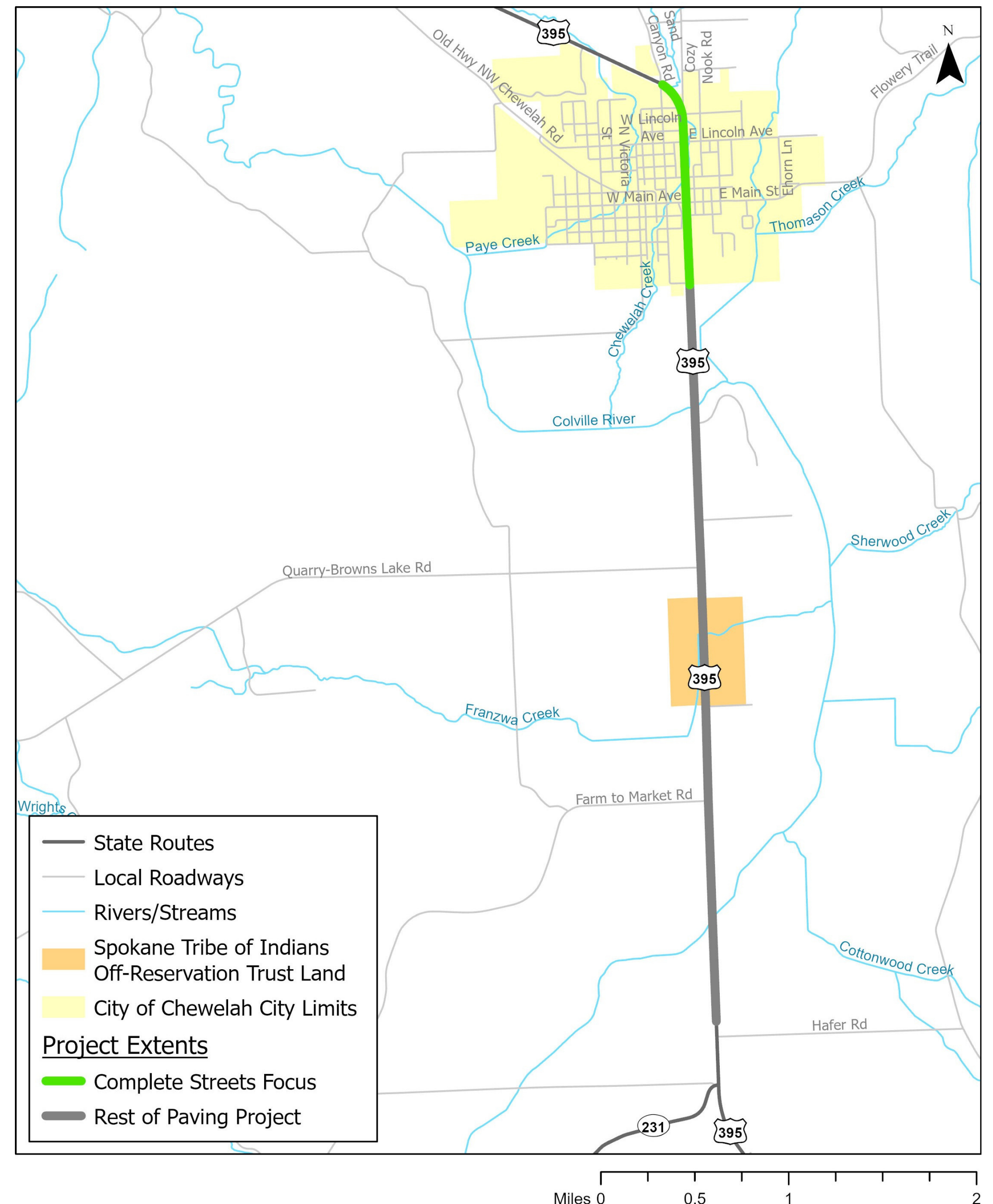
US 395 IN CHEWELAH WSDOT COMPLETE STREETS PROJECT

Project Summary

The original scope of the project included the repaving of US 395 from Hafer Rd. to Sand Canyon Rd. The project scope has been expanded and includes:

- Repaving the entire project corridor.
- Improvements to active transportation (walking, biking, and rolling) along and across US 395 as part of WSDOT's new Complete Streets process, focusing on the portion in the City of Chewelah.
- Possibility of restriping US 395 within the City of Chewelah to include a two-way center left turn lane and dedicated left turn lanes at Main Ave.

The project is currently in the planning and conceptual design phase, known as pre-design.



How Complete Streets Changes the Project

A paving project would normally include some limited active transportation improvements. Complete Streets more robustly addresses active transportation safety and comfort as part of projects within urbanized areas.

Typical Paving Active Transportation Improvements

- Restriping existing crosswalks and any existing on-street bicycle markings.
- Fixing damaged sidewalk ramps.
- Improving sidewalk ramps to meet current ADA standards (as conditions allow).

Complete Streets Considerations

- Add dedicated bicycle facilities or shared-use paths.
- Add missing sidewalks.
- Ensure existing sidewalks are up to standards and fix any damaged segments.
- Explore speed limit changes and strategies to slow traffic, lane width reductions, and reduction in the number of lanes.
- Enhance crossings of the highway with strategies such as median refuges, curb extensions, flashing beacons, and improved lighting.

For more project information, please visit the following link: <https://bit.ly/44Tkj71>