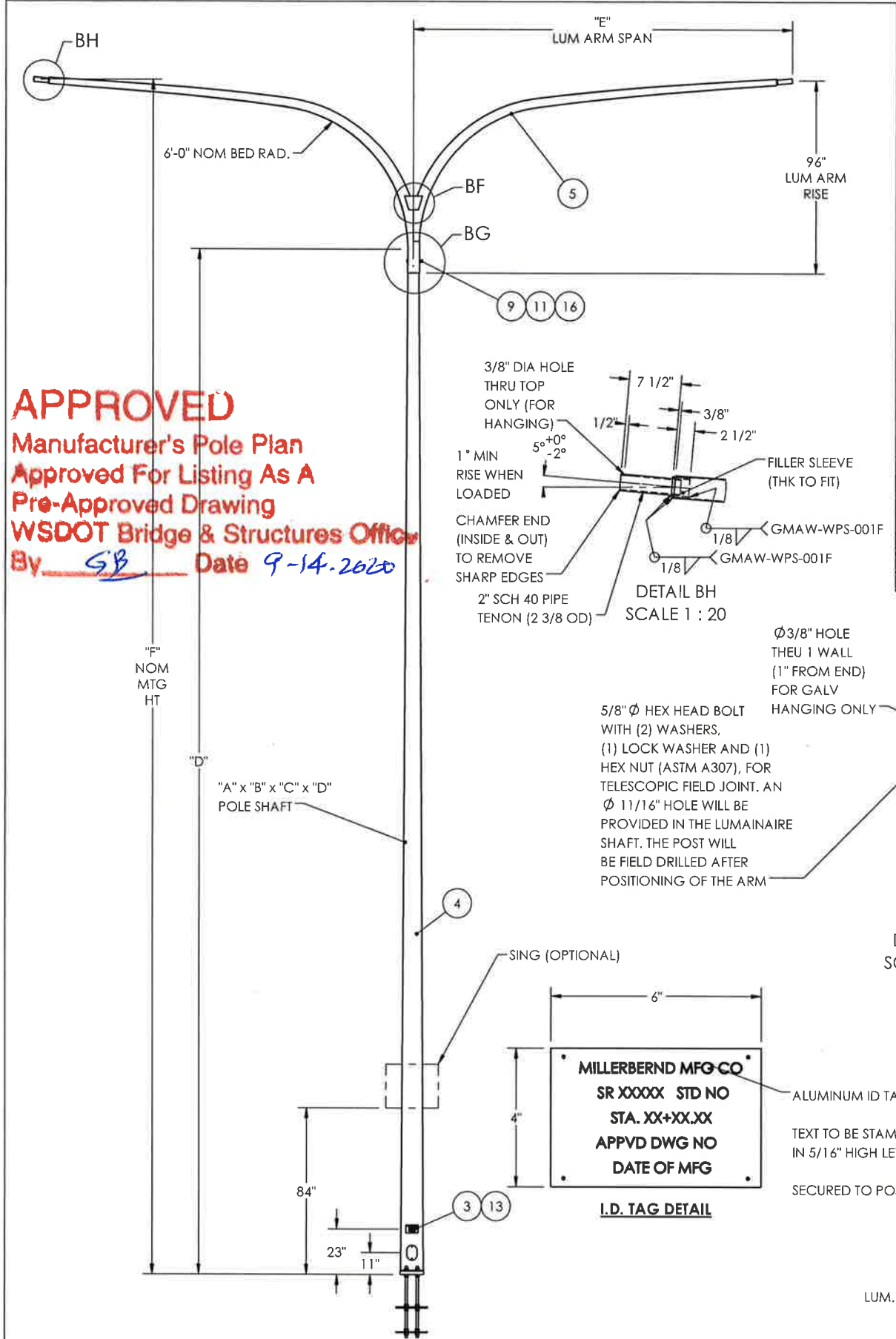
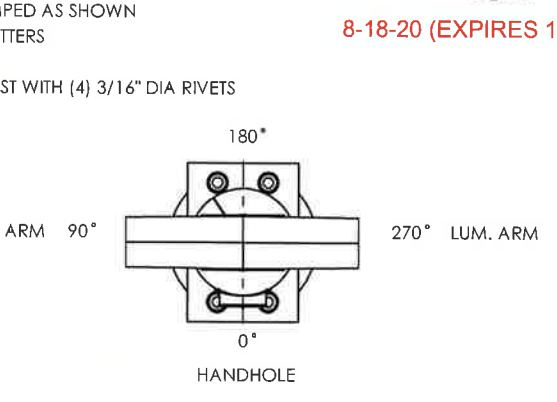
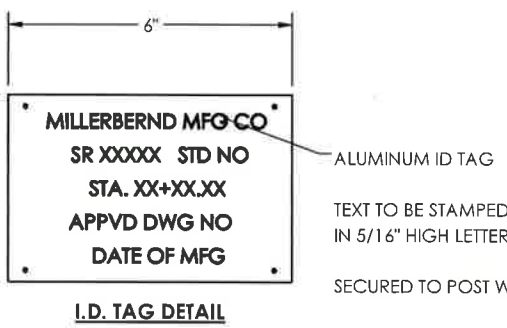
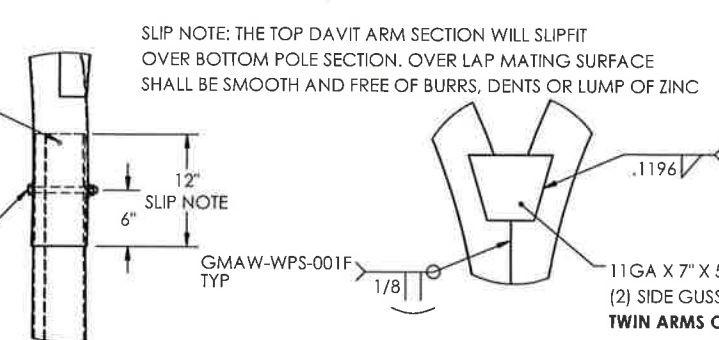
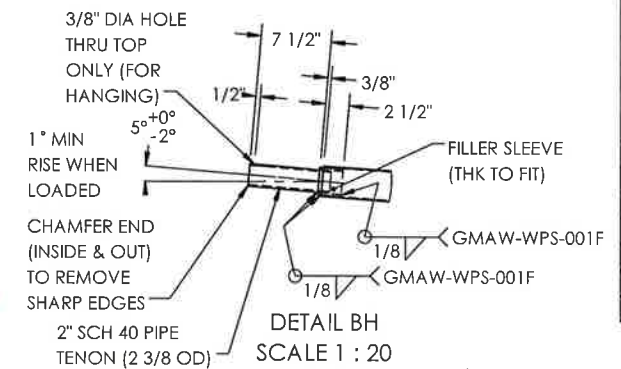


APPROVED
 Manufacturer's Pole Plan
 Approved For Listing As A
 Pre-Approved Drawing
 WSDOT Bridge & Structures Office
 By GB Date 9-14-2020



REV.	DESCRIPTION	DATE	DRFT
H	SHEET WAS NOTED AS 2 OF 2	7/20/2020	RK
G	UPDATED WELD NOTE UPDATED PER COMMENTS	6/12/2020	RK
F	UPDATED NOTES PER COMMENTS; UPDATED WPS TO MMC STANDARDS	5/12/2020	RK

POLE DATA - LIGHT POLE - TYPE 1 - BARRIER BASE POLE									
MMC #	QTY	POLE TUBE				ANCHOR BOLT DIA "H"	LUMINAIRE ARM		
		THICK (IN) "A"	BASE OUTER DIA (IN) "B"	TOP OUTER DIA (IN) "C"	LENGTH (FT) "D"		"E" SPAN	"F" MTG HT	
WA-LP1-BB-6S/6T-30							6'-0"		
WA-LP1-BB-8S/8T-30							8'-0"		
WA-LP1-BB-10S/10T-30							10'-0"		
WA-LP1-BB-12S/12T-30			8.72	5.5	23'-0"	1"	12'-0"	30'-0"	
WA-LP1-BB-14S/14T-30							14'-0"		
WA-LP1-BB-16S/16T-30							16'-0"		
WA-LP1-BB-6S/6T-35							6'-0"		
WA-LP1-BB-8S/8T-35							8'-0"		
WA-LP1-BB-10S/10T-35							10'-0"		
WA-LP1-BB-12S/12T-35			9.42	5.5	28'-0"	1"	12'-0"	35'-0"	
WA-LP1-BB-14S/14T-35							14'-0"		
WA-LP1-BB-16S/16T-35							16'-0"		
WA-LP1-BB-6S/6T-40							6'-0"		
WA-LP1-BB-8S/8T-40							8'-0"		
WA-LP1-BB-10S/10T-40							10'-0"		
WA-LP1-BB-12S/12T-40			10.12	5.5	33'-0"	1"	12'-0"	40'-0"	
WA-LP1-BB-14S/14T-40							14'-0"		
WA-LP1-BB-16S/16T-40							16'-0"		
WA-LP1-BB-6S/6T-50							6'-0"		
WA-LP1-BB-8S/8T-50							8'-0"		
WA-LP1-BB-10S/10T-50							10'-0"		
WA-LP1-BB-12S/12T-50		3/16	11.52	5.5	43'-0"	1 1/8"	12'-0"	50'-0"	
WA-LP1-BB-14S/14T-50							14'-0"		
WA-LP1-BB-16S/16T-50							16'-0"		



2015 AASHTO DEVIATION NOTES:

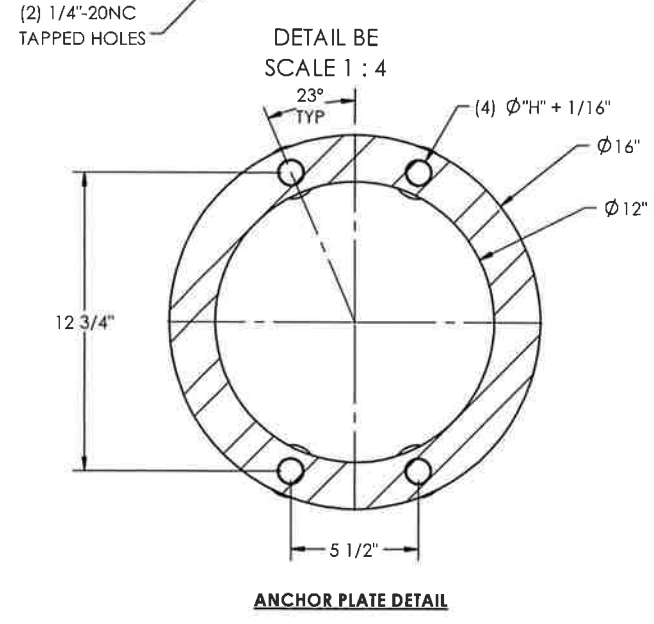
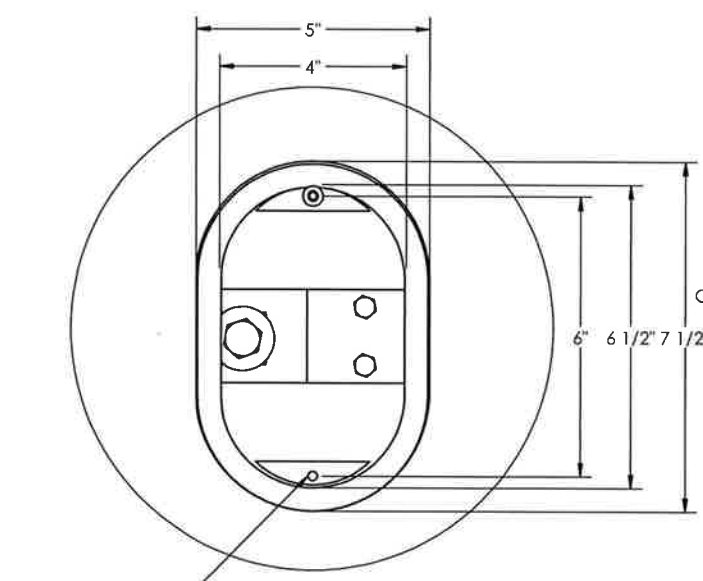
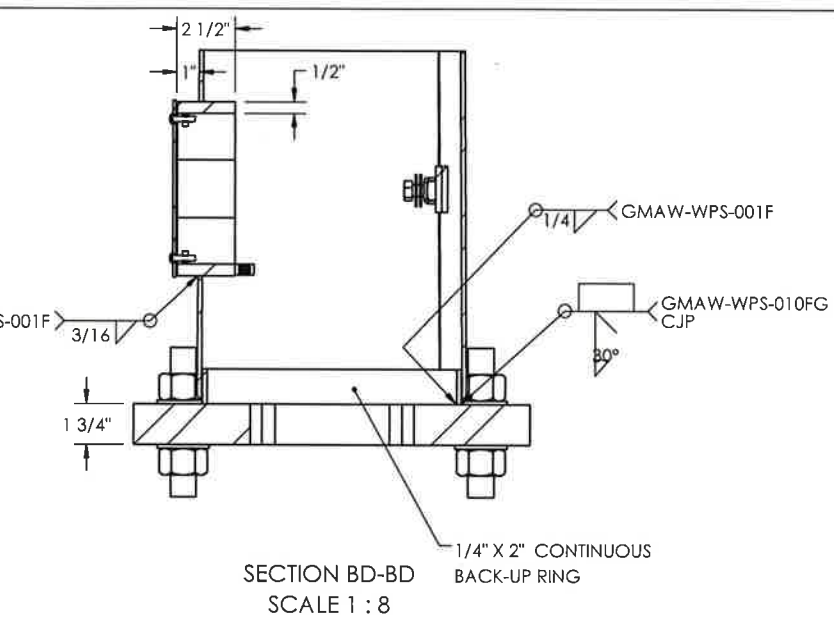
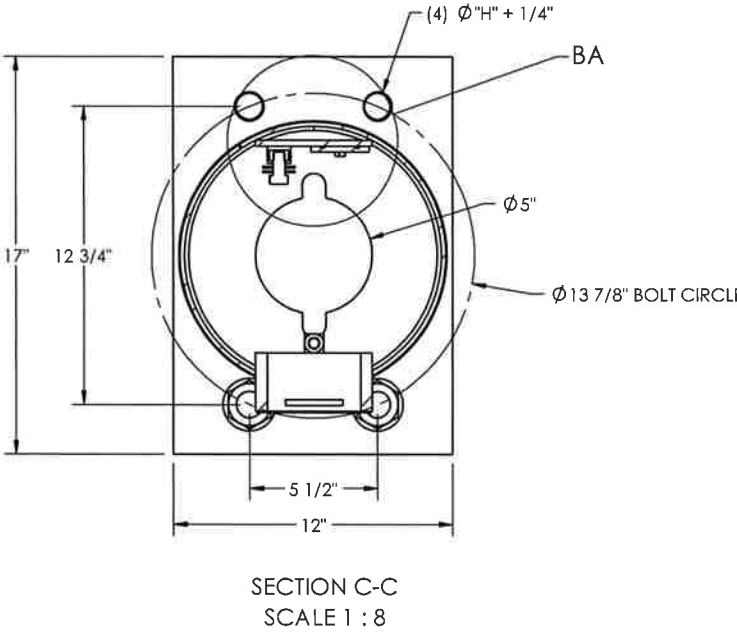
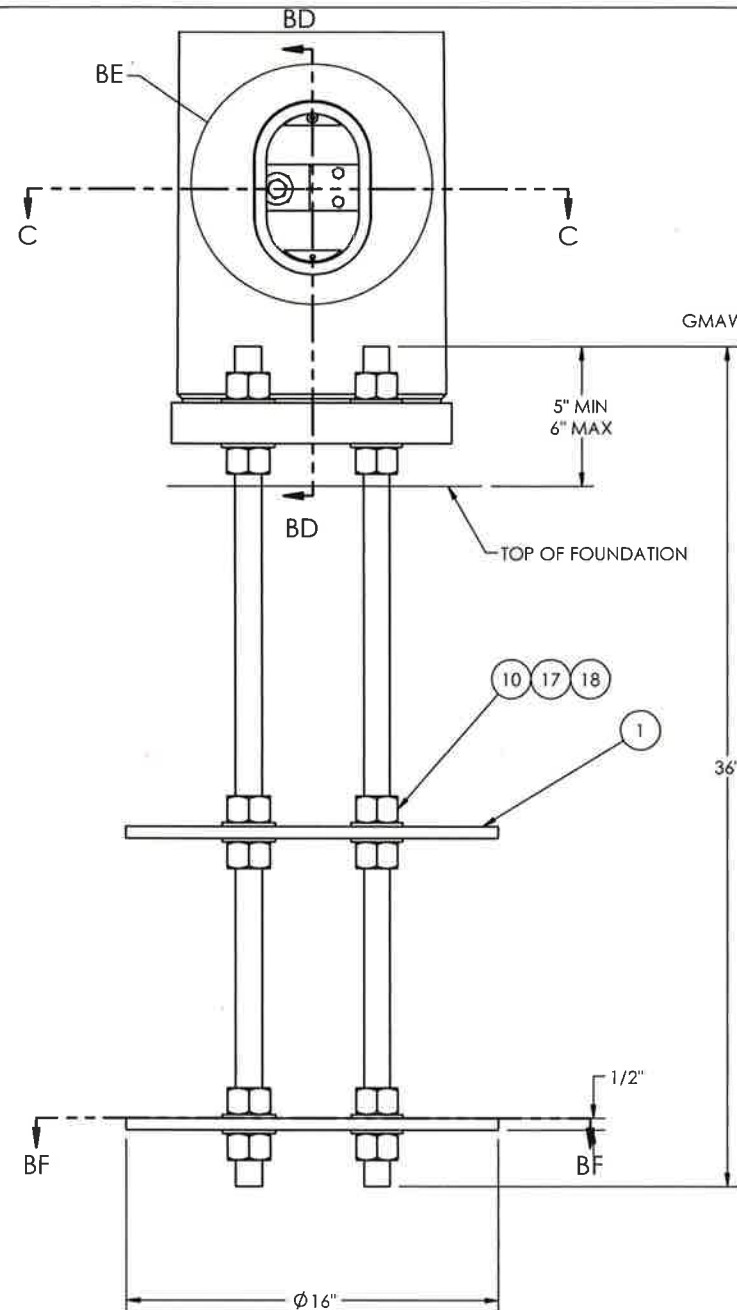
- SECTION 5.6.6 FOR HANDHOLE CLEAR DISTANCE AND 40% OF POLE WIDTH REQUIREMENT. STRESSES ARE REVIEWED AT EACH HANDHOLE FOR STRUCTURE ADEQUACY.
- PER AASHTO 2013 SECTION 5.17.4.3 - BEDDING STRESSES IN INDIVIDUAL BOLT CAN BE IGNORED IF THE STANDOFF DISTANCE BETWEEN THE TOP OF THE FOUNDATION AND BOTTOM OF THE LEVELING NUT IS LESS THAN ON BOLT DIAMETER.



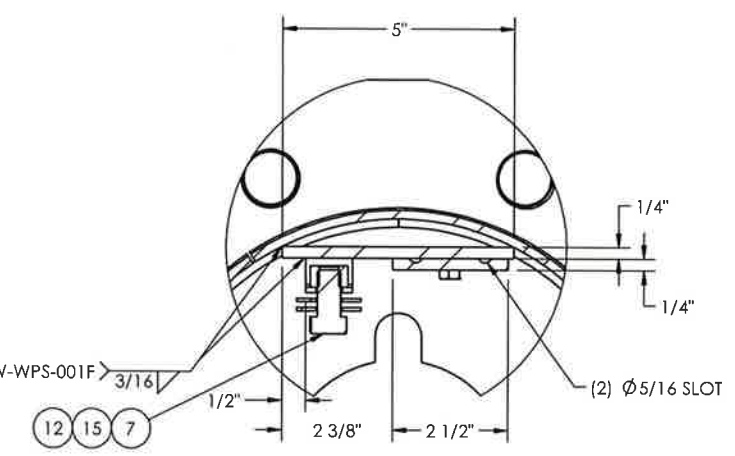
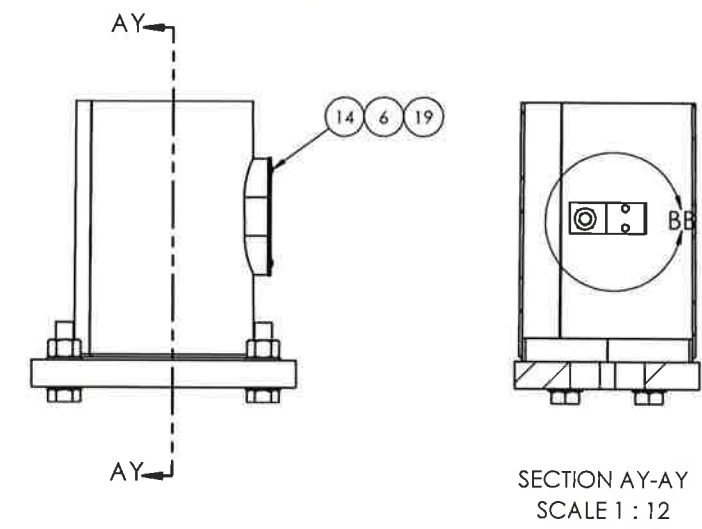
ITEM NO.	DESCRIPTION	QTY PER	ASSY	FINISH
1	BASE RD 1/2X16	2		X
2	GROUND MTG PLATE	2	X	X
3	I.D. TAG - WA	1	X	
4	WLSMT POLE LIGHT "A" x "B" x "C" x "D"	1		X
5	WLDMT ARM TWIN (SINGLE NOT SHOWN)	1		X
6	COVER HH M16C 4 1/4X6 3/4 2 BOLT	1		X
7	BOLT HX HD 1-2-13NC X 1" F593C SS	1	X	
8	BOLT HX HD 1/4-20NC X 1/2 F593C SS	2		
9	BOLT HX HD 5-8-11 NC X 7 A307 GV	1		
10	NUT HVY HX "H" A563 DH GV	24		
11	NUT HX 5-8-11 NC ASTM A563 GR DH	1		
12	NUT SQ 1-2-13 SS	1		
13	RIVET POP 3/16X1/2X3/8 HD SS	4	X	
14	SCRW HX SK BT HD 1-4-20NC X 1 SS	2		
15	WASH F.56 IDX1.375ODX.091 THK BRASS COMM. BRASS	2	X	
16	WASHER FLAT 5/8 ASTM F436	2		
17	WASHER WIDE FLAT "H" GV	24		
18	ANCHOR BOLT "H"X36 LG ALL THREAD	4		
19	GASKET HH M16	1	X	

MATERIAL SPECIFICATIONS			
POST: ASTM A572 GR55 BASE PLATE: ASTM A709 GR 50 MAST ARM: N/A MOUNTING PLATE: N/A HARDWARE FINISH: ASTM F2329 CONNECTION BOLTS: CONNECTION NUTS: CONNECTION WASHERS: ANCHOR BOLTS: ASTM F1554 GR105 ANCHOR BOLT NUTS: ASTM A563 GR DH ANCHOR BOLT WASHER: ASTM F436 WELDING ELBOW: F436 PIPE: ASTM A53 GR B OR ASTM A500 GR B			
DESIGN CRITERIA			
2015 AASHTO STANDARD SPECIFICATIONS FOR STRUCTURAL SUPPORTS ON HIGHWAY SIGNS, LUMINAIRES & TRAFFIC SIGNALS INCLUDING LATEST INTERIMS. WINDS: 115 MPH WITH A MEAN RECURRENCE INTERVAL OF 1700 YEARS VORTEX SHED: N/A FATIGUE CAT: N/A NATURAL WIND GUST: N/A LUMINAIRE: 3.3 SQ FT EPA LUMINAIRE WEIGHT: 50 LBS SIGN: 20 SQ FT @ 7' FROM BASE SIGN WEIGHT: 65 LBS			
WELD SPECIFICATION			
THE POST AND MAST ARM TO BE ROUND TAPERED TUBE FABRICATION WITH ONE SUBMERGED ARC LONGITUDINAL SEAM WELD WITH 100% PENETRATION 6" FROM BASE PLATE, FLANGE AND BUTT WELDED SHAFTS. EXCEPT FOR TUBES LESS THAN 5 IN DIAMETERS; FOR FEMALE SECTION OF SLIP JOINTED TUBES 10" AND GREATER: 1.5 X FEMALE SECTION INSIDE DIAMETER + 6 INCHES. FOR FEMALE SECTION OF SLIP JOINTED TUBES LESS THAN 10" FEMALE SECTION NOMINAL DIAMETER AND 60% FOR REMAINDER. GAS METAL ARC WELDING PROCESS WITH 60% PENETRATION MAY BE USED FOR REMAINDER OF WELDED FABRICATION.			
WELD TESTING: 100% OF ALL WELDS VISUAL TESTED (VT), 100% OF ALL COMPLETE JOINT PENETRATION (CJP) WELDS ULTRASONIC TESTED (UT) BASED ON THE THINNEST MATING MATERIAL: (PER AASHTO 2013 5.15.5-WELD INSP) THICKNESS. < 6MM (0.25 IN) MT ≥ 6MM (0.25 IN) UT A RANDOM 30% OF ALL FILLET WELDS AND PARTIAL JOINT PENETRATION (PJP) LONGITUDINAL SEAM WELDS MAGNETIC PARTICLE TESTED (MT).			
WELDING INSPECTION OF STRUCTURE SHALL BE IN ACCORDANCE WITH THE REQUIREMENTS OF WASHINGTON STATE DEPARTMENT OF TRANSPORTATIONS STANDARD SPECIFICATION SECTION 6-03.3(25) AND ASSHTO 2015 WELD INSPECTION SECTION 14.4.4.8			
STRUCTURE FINISH SPECIFICATION			
GALV. OR PRIME COAT: HOT DIPPED GALV. PER ASTM A123 FINISH COAT: COLOR: FEDERAL OR RAL SPEC.: WEIGHT W/GALV.: WEIGHT W/GALV. & PAINT: SURFACE AREA: GAL. OF PAINT:			
		622 6TH ST. SO. WINSTED, MN 55395	
THIS DOCUMENT CONTAINS CONFIDENTIAL INFORMATION AND IS THE PROPERTY OF MILLERBERND MFG AND MAY NOT BE COPIED, REPRODUCED OR DISCLOSED IN ANY MANNER WITHOUT THE EXPRESS WRITTEN CONSENT FROM MILLERBERND MFG			
SALES ORDER NO.:	QTY:	STATE:	SHEET
74515	-	WA	1 OF 2
DESCRIPTION: SUB LIGHT POLES TYPE 1			
EST. WEIGHT:		DRAWING NO:	
		74515-WA-LP1-BB	
PROJECT NAME: STATE OF WASHINGTON LIGHT POLES - TYPE 1			
PROJECT LOCATION: WA			
DWN BY: REBEKAH		DATE: 2/3/17	
CHK BY:		DATE:	

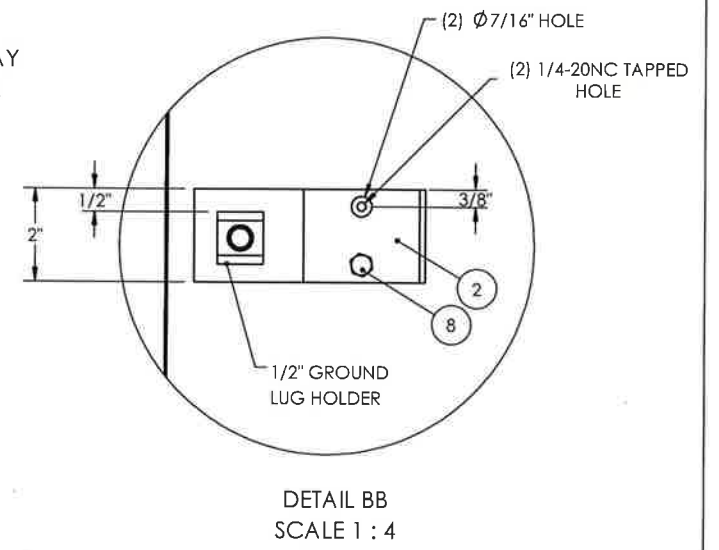
NOTE: FOR NOTE AT WELD SYMBOL TAIL, SEE WELDING PROCEDURE SPECIFICATION



SECTION BF-BF SCALE 1:8



DETAIL BA SCALE 1:4



DETAIL BB SCALE 1:4

APPROVED
 Manufacturer's Pole Plan
 Approved For Listing As A
 Pre-Approved Drawing
 WSDOT Bridge & Structures Office
 By GB Date 9-14-2020



8-18-20 (EXPIRES 12-18-21)

		622 6TH ST. SO. WINSTED, MN 55395	
THIS DOCUMENT CONTAINS CONFIDENTIAL INFORMATION AND IS THE PROPERTY OF MILLERBERND MFG AND MAY NOT BE COPIED, REPRODUCED OR DISCLOSED IN ANY MANNER WITHOUT THE EXPRESS WRITTEN CONSENT FROM MILLERBERND MFG			
SALES ORDER NO.:	QTY:	STATE:	SHEET
74515	-	WA	2 OF 2
DESCRIPTION: SUB LIGHT POLES TYPE 1			
EST. WEIGHT:	DRAWING NO: 74515-WA-LP1-BB		
PROJECT NAME: STATE OF WASHINGTON LIGHT POLES - TYPE 1			
PROJECT LOCATION: WA			
PROJECT NO.:	CONTROL/CONTRACT NO.:		
DWN BY: REBEKAH	DATE: 2/3/17		
CHK BY:	DATE:		